

REV	LOCATIONS	DESCRIPTION	DATE	REVISER	APPD

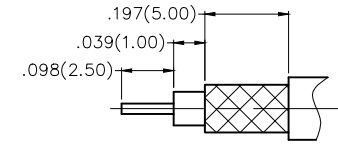
**SPECIFICATION**

**Electrical**

Impedance: 50Ω  
 VSWR: 1.5 Max  
 Frequency range: DC-6GHZ  
 Working Voltage: 250V AC  
 Insulation Resistance: 5000MΩ Min.  
 Withstand Voltage: 1000V, 50Hz rms.  
 Temperature Range-Operating: -55°C~+155°C  
 Relative Humidity: 95% Max. (40°C±2°C)

**Material And Plating**

Insulator: TEFLON (UL 94V-0), White  
 Body: Copper Alloy/ Gold Flash  
 Center Pin: Copper Alloy/ Gold Plated  
 Nut: Copper Alloy/ Gold Flash  
 Washer: Copper Alloy/ Gold Flash  
 Slice: Copper Alloy

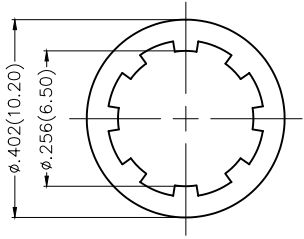
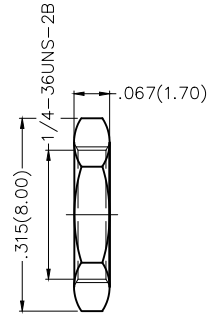
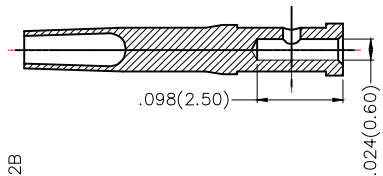
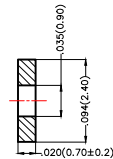
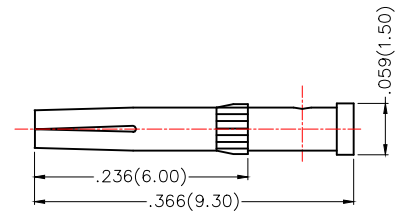
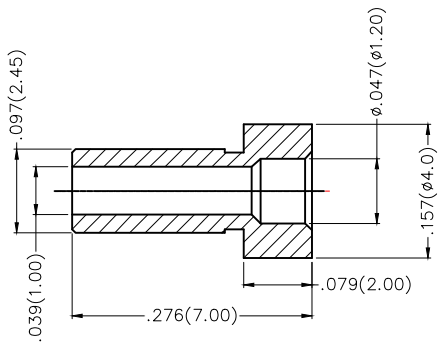
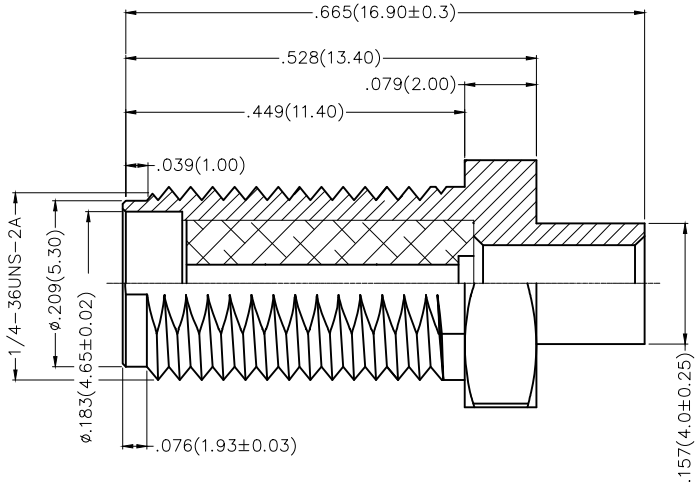
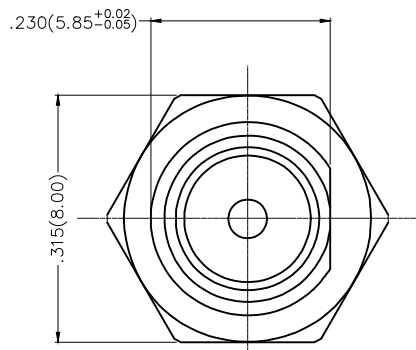


Recommend Cutting Dim. of Cable

**Ordering Information**

FRF 01 014 - J R S 1 XX B  
 1 2 3 4 5 6 7 8 9

- |                                     |                                    |   |                           |  |
|-------------------------------------|------------------------------------|---|---------------------------|--|
| 1   Category<br>FRF-Radio Frequency | 2   Series Number<br>01-SMA Series | 3   Distinction No.<br>014  | 4   Type<br>J-Jack        | 5   Assemble Layout<br>R-Crimping Type |
| 6   Entry Angle<br>S-180°Vertical   | 7   Plating<br>1-Gold Plated       | 8   Thickness of Plating<br>00-Gold Flash<br>03-3μ"<br>Custom plate available | 9   Packaging<br>B-PE Bag |  |



 THIRD ANGLE PROJECTION	GENERAL TOLERANCES (UNLESS SPECIFIED)		APPROVE BY FRANK	DATE 20/JUL/16	PART NO. FRF01014-JRS1XXB	ITEM NO. FRF01014	 Leader Of Industry
	DESIGN UNITS Inch (metric)	X.±.012(0.30)	X.±5'	CHECKED BY CHERRY	DATE 20/JUL/16	TITLE SMA RF JACK	
SCALE 5:1	SIZE A4	X.XX±.008(0.20)	X.X'±2'	DRAWN BY KATE	DATE 20/JUL/16	THIS DRAWING CONTAINS INFORMATION THAT IS PROPRIETARY TO TXGA INDUSTRIAL ELECTRONICS(S.Z)CO.,LTD AND SHOULD NOT BE USED WITHOUT WRITTEN PERMISSION	
		X.XX±.006(0.15)	.XX'±1'			REV 0	SHEET NO. 1/1
		X.XXX±.004(0.10)	.XXX±0.5'				